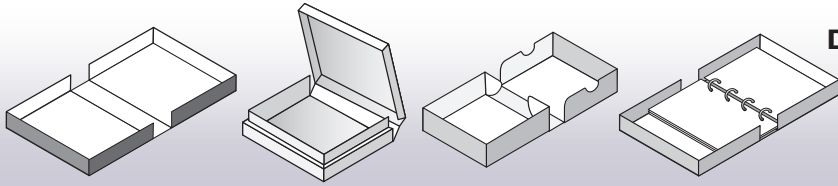
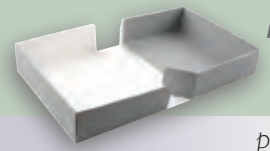


**BOX STYLES**

**STYLE CODE**

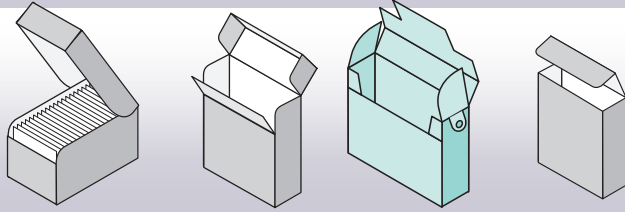


**Drop Spine Boxes**  
(Clamshell)



**AB**

p 8

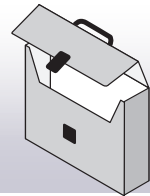


**Hinged Lid Boxes**



**BB**

p 17

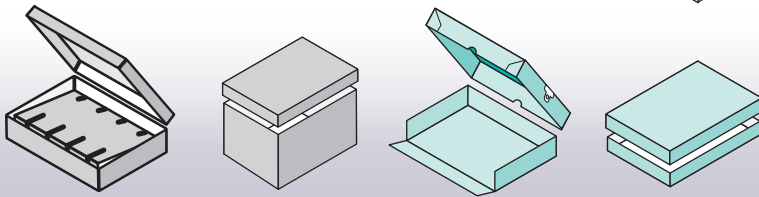


**Hinged Lid with Carry Handle**  
(Newspaper System)

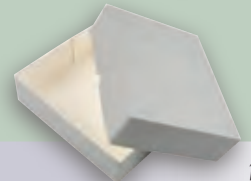


**CB**

p 20

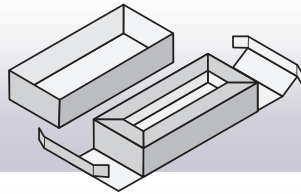


**Two-Part Boxes**

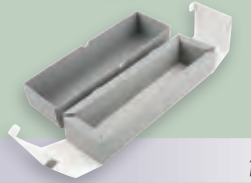


**DB**

p 21

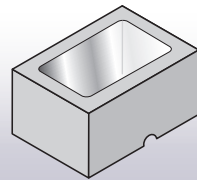


**Drop Wall Box**  
(Exploding Box)  
(Palm Leaf Box)



**EB**

p 26

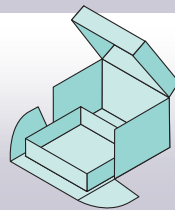


**Window Boxes**



**FB**

p 26

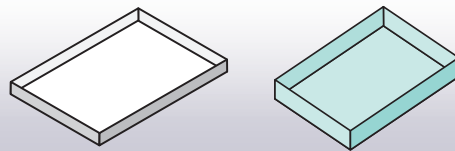


**Drawer-Tray Boxes**

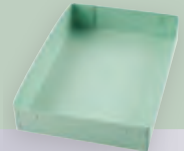


**GB**

p 27

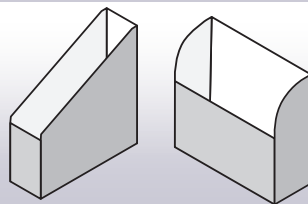


**Storage Trays**

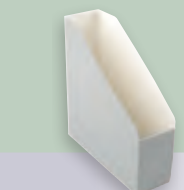


**HB**

p 28

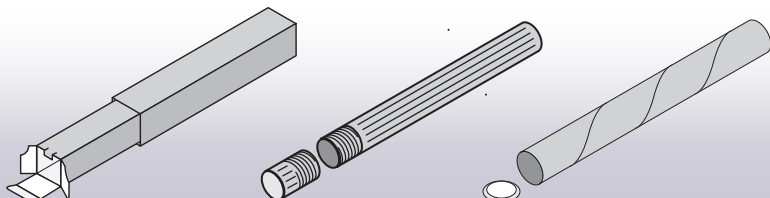


**Open Top Vertical Storage**

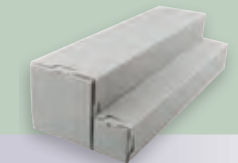


**IB**

p 28



**Roll Storage**



**JB**

p 29

STYLE CODE AB01

## Premier™ Drop Spine Box – Tabbed

*Library storage boxes: archival boxboard, tabbed assembly*

The original box design and storage system developed for the Bodleian Library by Christopher Clarkson between 1978-1981. Made from Premier Archival Folding Boxboard which is acid-free and lignin-free a one-piece box with an overlapping lid that folds along the spine - it is self locking and opens like a book. The spine lays flat to allow easy access to contents. The tray has double walls on all sides and two dust flaps, which close against the spine. Secured using tabs and slots for assembly without the need for wire stitching or gluing.



Embossing showing Bodleian code and year of manufacture



Duke Parchment box next to vellum bindings

*These boxes are supplied flat-packed for easy low cost shipping and space saving.*

*For boxes that are shown as flat packed, these can be assembled at an additional cost.*

### Specifications

- Made from Premier™ Archival Folding Boxboard (full specification available p96)
- Acid-free and lignin-free board
- Board passes Photographic Activity Test (PAT)
- Supplied flat-packed
- Colour: Grey/White as standard
- Duke Parchment/White and Sepia colours available for special order

LONG LIFE



ISO 9706



ISO18916

### Applications

- Suitable for archival storage of books, documents, photographs, prints

Product code	Ref*	Colour	Thickness microns	Internal Size inches	Internal Size mm
400691		Grey/White	650	57/16 x 57/16 x 13/16	138 x 138 x 20
400001	A6	Grey/White	650	51/16 x 45/16 x 115/16	151 x 109 x 50
400692		Grey/White	650	73/8 x 73/8 x 13/16	188 x 188 x 20
400003	E2	Grey/White	1000	7 1/2 x 5 1/4 x 1	191 x 133 x 25
400002	E1	Grey/White	1000	7 1/2 x 5 1/2 x 2 1/4	191 x 133 x 57
400005	E4	Grey/White	1000	8 1/2 x 5 1/2 x 1 3/4	216 x 140 x 44
400004	E3	Grey/White	1000	8 1/2 x 5 1/2 x 3 1/4	216 x 140 x 83
400006	E5	Grey/White	1000	8 1/2 x 6 1/2 x 3 1/4	216 x 165 x 83
400693		Grey/White	1000	87/8 x 75/16 x 1	225 x 185 x 25
400694		Grey/White	1000	12 x 95/8 x 1	305 x 245 x 25
400695		Grey/White	1000	153/8 x 105/8 x 2 3/4	390 x 270 x 70
400696		Grey/White	1300	811/16 x 57/8 x 2 3/4	220 x 150 x 70
400697		Grey/White	1300	9 1/4 x 57/8 x 2 3/4	235 x 150 x 70
400698		Grey/White	1300	9 1/4 x 61/8 x 31/8	235 x 155 x 80
400009	D2	Grey/White	1300	9 1/4 x 7 1/4 x 1 3/4	235 x 184 x 44
400008	D1	Grey/White	1300	9 1/4 x 7 1/4 x 3 3/4	235 x 184 x 95
400011	D4	Grey/White	1300	10 1/4 x 7 3/4 x 1 3/4	260 x 197 x 44
400010	D3	Grey/White	1300	10 1/4 x 7 3/4 x 3 3/4	260 x 197 x 95
400699		Grey/White	1300	10 1/4 x 8 1/4 x 3 3/4	260 x 210 x 95
400013	D6	Grey/White	1300	11 1/4 x 8 3/4 x 1 3/4	286 x 222 x 44
400012	D5	Grey/White	1300	11 1/4 x 8 3/4 x 3 3/4	286 x 222 x 95
400028		Grey/White	1300	11 1/2 x 9 1/2 x 3 3/4	292 x 241 x 95
400700		Grey/White	1300	11 13/16 x 8 1/4 x 1 3/4	300 x 210 x 45
400701		Grey/White	1300	123/16 x 811/16 x 2 3/4	310 x 220 x 70
400702		Grey/White	1300	123/16 x 97/16 x 2 3/4	310 x 240 x 70
40016A4	A4 D9	Grey/White	1300	12 1/4 x 8 3/4 x 1 3/4	311 x 222 x 44
40015A4	A4 D8	Grey/White	1300	12 1/4 x 8 3/4 x 2 3/4	311 x 222 x 70

Product code	Ref*	Colour	Thickness microns	Internal Size inches	Internal Size mm
400014A4	A4 D7	Grey/White	1300	12 1/4 x 8 3/4 x 3 3/4	311 x 222 x 95
400703	-	Grey/White	1300	12 1/4 x 9 15/16 x 3 3/4	311 x 252 x 95
400704	-	Grey/White	1300	125/8 x 811/16 x 2 3/4	320 x 220 x 70
400705	-	Grey/White	1300	125/8 x 97/16 x 2 3/4	320 x 240 x 70
400706	-	Grey/White	1300	13 x 11 x 4 1/2	330 x 279 x 114
400018	C2	Grey/White	1300	13 1/4 x 10 1/4 x 1 3/4	337 x 260 x 44
400017	C1	Grey/White	1300	13 1/4 x 10 1/4 x 2 3/4	337 x 260 x 70
400029	A4 -	Grey/White	1300	14 x 9 1/2 x 3 3/4	355 x 241 x 95
400707	-	Grey/White	1300	14 x 91/16 x 315/16	356 x 230 x 100
400708	-	Grey/White	1300	143/16 x 11 1/4 x 2 3/4	360 x 285 x 70
400709	-	Grey/White	1300	143/16 x 125/8 x 315/16	360 x 320 x 100
400020Folio	Folio C4	Grey/White	1300	14 1/4 x 9 1/4 x 1 3/4	362 x 235 x 44
400019Folio	Folio C3	Grey/White	1300	14 1/4 x 9 1/4 x 2 3/4	362 x 235 x 70
400022	C6	Grey/White	1300	14 1/4 x 10 3/4 x 1 3/4	362 x 273 x 44
400021	C5	Grey/White	1300	14 1/4 x 10 3/4 x 2 3/4	362 x 273 x 70
400024	C8	Grey/White	1300	14 1/4 x 11 1/2 x 1 3/4	362 x 292 x 44
400023	C7	Grey/White	1300	14 1/4 x 11 1/2 x 2 3/4	362 x 292 x 70
400710	K1	Grey/White	1300	15 1/2 x 10 3/4 x 4 3/4	393 x 273 x 120
400711	-	Grey/White	1300	14 1/4 x 10 3/4 x 2 3/4	362 x 273 x 70
400712	-	Grey/White	1300	143/8 x 9 1/2 x 315/16	365 x 242 x 100
400713	-	Grey/White	1300	143/8 x 9 1/2 x 59/16	365 x 242 x 142
400714	-	Grey/White	1300	149/16 x 107/16 x 59/16	370 x 265 x 142
400715	-	Grey/White	1300	149/16 x 107/16 x 2 3/4	370 x 265 x 70
400716	-	Grey/White	1300	149/16 x 10 3/4 x 213/16	370 x 274 x 72
400717	-	Grey/White	1300	149/16 x 11 x 2 3/4	370 x 280 x 70
400718	-	Grey/White	1300	149/16 x 115/16 x 215/16	370 x 288 x 75
400719	-	Grey/White	1300	145/8 x 10 1/4 x 1 3/4	371 x 260 x 44

P-BOX MOUNTING AND STORAGE SYSTEM

STYLE CODE AB02

Premier™ Drop Spine Photographic Boxes – Tabbed ('P-Box' System)

Photographic print storage boxes:  
Archival boxboard, tabbed assembly

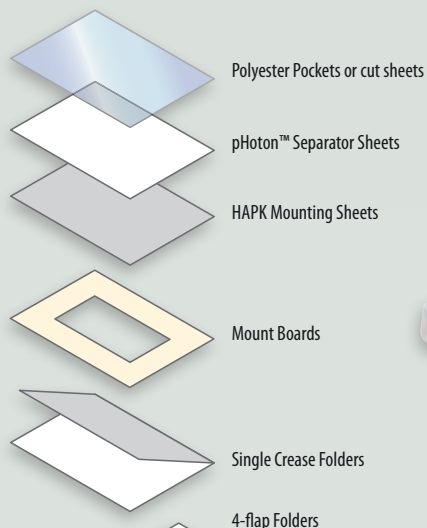
Developed from the Clarkson design, these boxes are made from photo safe Premier™ Archival acid-free and lignin-free boxboard, to offer permanence and durability.



BXPADS series



Glass plates and old photographs.



Polyester Pockets or cut sheets

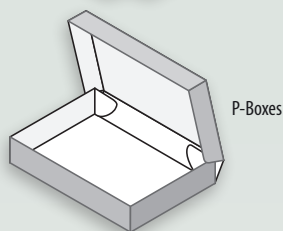
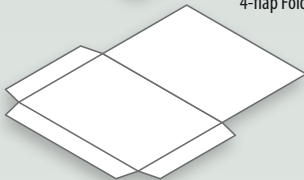
pHoton™ Separator Sheets

HAPK Mounting Sheets

Mount Boards

Single Crease Folders

4-flap Folders



P-Boxes

**Information**

**P-Box Size Guide**

GLASS PLATE SIZES

**P0** = 5" x 7"

**PZ** = 10" x 7"

PHOTOGRAPHIC PRINT SIZES

**P1** = 8" x 10"

**P2** = 10" x 12"

**P3** = 12" x 16"

**PX** = 14" x 11"

**P4** = 16" x 20"

**P5** = 20" x 24" or A2

Once self assembled these boxes are designed to hold mounted photographic prints in most common sizes and are 9.5mm (3/8") larger than the mount formats.

These form part of the 'P Box mounting and storage system' including pHoton™ papers, pHoton™ folders, Heritage Archival pHotokraft single crease folders, Polyester pockets and Timecare Heritage Museum and Conservation mount boards. All available to suit each size of Premier™ 'P-Boxes'.

Parchment and Seal storage folders with Plastazote inserts are also designed to fit PX and P4 boxes, see p46.

**Specifications**

- Made from Premier™ Archival Folding Boxboard
- Acid-free and lignin-free Board
- Board Passes Photographic Activity Test (PAT)
- Supplied flat-packed
- Colour: Grey/White as standard



Embossing

Product code	Ref*	Colour	Thickness microns	Internal Size inches	Internal Size mm
408084	-	Grey/White	1300	153/16 x 103/16 x 4 1/2	385 x 275 x 115
400720	-	Grey/White	1300	157/16 x 11 3/4 x 2115/16	392 x 299 x 74
400025	-	Grey/White	1300	15 3/4 x 11 3/4 x 2 3/4	400 x 298 x 70
400721	-	Grey/White	1300	161/8 x 1113/16 x 2 3/4	410 x 300 x 70
400722	-	Grey/White	1300	163/8 x 123/8 x 2 1/2	416 x 314 x 64
400030	-	Grey/White	1300	16 1/2 x 9 1/2 x 3 3/4	419 x 241 x 95
400723	-	Grey/White	1300	169/16 x 1113/16 x 1 3/4	420 x 300 x 45
400724	-	Grey/White	1300	169/16 x 129/16 x 115/16	420 x 319 x 50
400725	-	Grey/White	1300	169/16 x 129/16 x 315/16	420 x 319 x 100
400726	-	Grey/White	1300	1615/16 x 57/8 x 115/16	430 x 150 x 50
408713	-	Grey/White	1300	1615/16 x 125/8 x 2 3/4	430 x 325 x 64
400727	-	Grey/White	1300	17 1/4 x 12 1/2 x 23/8	438 x 317 x 60
400728	-	Grey/White	1300	181/8 x 13 3/4 x 2 1/2	460 x 350 x 64
400729	-	Grey/White	1300	1915/16 x 133/8 x 2 3/4	490 x 340 x 70
400562	A3+	Grey/White	1300	1915/16 x 1311/16 x 2 1/2	497 x 347 x 64
400026	A1	Grey/White	1300	20 x 16 x 4 1/2	508 x 406 x 114
400730	-	Grey/White	1300	223/16 x 161/8 x 31/8	563 x 410 x 80
400371	-	Grey/White	1300	22 3/4 x 17 x 2 1/4	578 x 432 x 57
400731	-	Grey/White	1300	235/8 x 169/16 x 1 3/4	600 x 420 x 45
400732	-	Grey/White	1300	2313/16 x 17 x 31/8	605 x 432 x 80
400733	-	Grey/White	1300	24 1/2 x 1715/16 x 2 1/2	622 x 455 x 64
400734	-	Grey/White	1300	263/8 x 57/8 x 39/16	670 x 150 x 90
400735	-	Grey/White	1300	2615/16 x 201/16 x 25/16	685 x 510 x 58
400736	-	Grey/White	1300	279/16 x 181/8 x 215/16	700 x 460 x 74

P-BOX SYSTEM

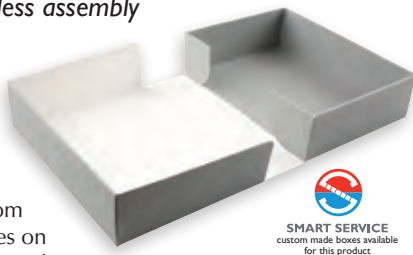
Product code	Style	Colour	microns	Internal Size inches	Internal Size mm
400055P0	P0	Grey/White	1300	7 1/2 x 55/8 x 2 1/2	190 x 143x64
400056PZ	PZ	Grey/White	1300	101/8 x 7 3/4 x 2 1/2	257 x 197 x 64
400057P1	P1	Grey/White	1300	105/8 x 8 1/2 x 2 1/2	270 x 216 x 64
400058P2	P2	Grey/White	1300	12 1/2 x 10 1/2 x 2 1/2	317 x 266 x 64
400059PX	PX	Grey/White	1300	145/8 x 11 1/2 x 2 1/2	371 x 293x 64
400060P3	P3	Grey/White	1300	169/16 x 129/16 x 2 1/2	420 x 319 x 64
400061P4	P4	Grey/White	1300	20 1/2 x 169/16 x 2 1/2	520 x 420 x 64
400062P5	P5	Grey/White	1300	24 1/2 x 209/16 x 2 1/2	622 x 522 x 64
400064	-	Grey/White	1300	169/16 x 129/16 x 1 3/4	420 x 319 x 45
400063P4	-	Grey/White	1300	20 1/2 x 169/16 x 19/16	520 x 420 x 40

**STYLE CODE AB03**

**Premier™ Drop Spine Box - Tabless**

Drop spine library & photographic boxes:  
Archival boxboard, tabless assembly

A unique design of box developed by Arte & Memoria which eliminates the need for tabs protruding from the exterior of the box which prevents boxes from snagging with other boxes on shelves. These boxes are made from Premier Archival acid-free and lignin-free Boxboard, the box has a superior look and is a very popular style for bespoke **Kasemake-A&M SMART boxes**. Assembly may require gluing with EVACON adhesive or a suitable hot melt adhesive.



**STYLE CODE AB04**

**Premier™ Drop Back Microfilm Boxes**

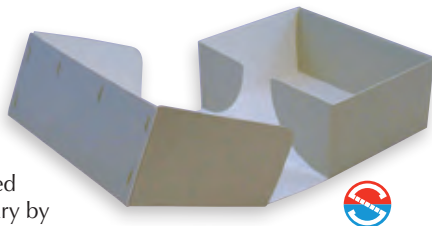
Manufactured from Premier Archival acid-free and lignin-free boxboard, this one-piece box has an overlapping lid that folds along the spine - it is self locking and opens like a book, the spine lays flat to allow easy access to contents.



**STYLE CODE AB05**

**Premier™ Library Wire Stitched Drop Spine Box**

These one-piece drop spine ready assembled boxes were designed as an alternative to the flat packed boxes designed for the Bodleian Library by Christopher Clarkson. Made from Premier Archival acid-free and lignin free boxboard.



They are secured with brass wire stitches, but only on the front lid so that no wire comes in to contact with the contents of the box.

The Library Drop Spine boxes are ready constructed.

**Applications**

- Suitable for archival storage of books, magazines, periodicals, documents, photographs, prints, negatives, transparencies, drawings, letters and ephemera.

**Information**

Certain styles of boxes are embossed with a box reference number and year of manufacture. Embossing can be specified to all boxes for special order.

**Specifications**

- Made from Premier™ Archival Folding Boxboard
- Acid-free and lignin-free Board
- Board Passes Photographic Activity Test (PAT)
- Supplied flat-packed
- Colour: Grey/White as standard
- Duke Parchment/White colour available for special order



Product code.	Colour	microns	Internal Size inches	Internal Size mm
400371	Grey/White	1300	22¾ x 17 x 2¼	578 x 432 x 57

Special sizes quoted on request.

**Specifications**

- Made from 650 micron Premier™ Archival Folding Boxboard
- Acid-free and lignin-free Board
- Board Passes Photographic Activity Test (PAT)
- Supplied flat-packed
- Can be embossed or printed to special order
- Colour: Grey/White as standard
- Duke Parchment/White colour available for special order



Product code.	Colour	Thickness microns	Internal Size inches	Internal Size mm
400145	Grey/White	650	37/8 x 37/8 x 15/8	98 x 98 x 41
400737	Grey/White	650	4½ x 61/8 x 1	115 x 155 x 25

**Specifications**

- Made from 1300 micron Premier™ Archival Folding Boxboard
- Acid-free and lignin-free Board
- Board Passes Photographic Activity Test (PAT)
- Supplied ready assembled
- Colour: Grey/White as standard
- Duke Parchment/White colour available for special order



Product code.	Colour	microns	Internal Size inches	Internal Size mm
400738	Grey/White	1300	7¼ x 5¼ x 315/16	184 x 133 x 100
400100	Grey/White	1300	7¾ x 5¾ x 37/8	197 x 146 x 98
400101	Grey/White	1300	9 x 7 x 37/8	229 x 178 x 98
400102	Grey/White	1300	9¾ x 7¾ x 37/8	248 x 197 x 98
400103	Grey/White	1300	11 x 9 x 37/8	280 x 229 x 98
400739	Grey/White	1300	115/16 x 811/16 x 311/16	288 x 220 x 94
400740	Grey/White	1300	143/8 x 13¾ x 3¼	365 x 349 x 83
400104	Grey/White	1300	11½ x 9¼ x 37/8	292 x 235 x 98
400105	Grey/White	1300	125/16 x 9¼ x 37/8	312 x 235 x 98
400106	Grey/White	1300	13½ x 9¾ x 37/8	343 x 248 x 98
400741	Grey/White	1300	141/8 x 1113/16 x 37/8	358 x 300 x 98
400742	Grey/White	1300	13¾ x 8½ x 3½	349 x 216 x 89
400743	Grey/White	1300	14¼ x 9¾ x 33/8	362 x 248 x 86
400744	Grey/White	1300	14¼ x 117/8 x 37/8	362 x 302 x 98
400745	Grey/White	1300	151/16 x 119/16 x 37/8	382 x 294 x 99
400746	Grey/White	1300	15¾ x 11¾ x 33/8	400 x 299 x 85
400747*	Grey/White	1300	165/8 x 141/8 x 31/8	422 x 359 x 79
400748*	Grey/White	1300	175/8 x 15½ x 31/8	448 x 394 x 79
400099	Grey/White	1300	17½ x 159/16 x 31/8	445 x 395 x 79

\*These two boxes are made as two parts stitched together.

## RINGBINDER BOXES

Arte y Memoria offer a range of acid-free ringbinder boxes using a variety of materials and methods of construction, from hand-made to machine die-cut which are hand finished.

To complement all our ringbinder boxes there are a wide range of chemically inert transparent polyester Timecare® album pages with great flexibility of 'pocket' styles which assist in organising the contents. See Transparent Storage section pages 50-60.

STYLE CODE AB06

### Timecare® LIBRARY Ringbinder Box

These ringbinder boxes have long been a best seller to both institutional users and the private individual for the storage of a wide range of materials.

The Timecare® Library ringbinder box is machine die-cut and hand assembled from Premier Archival acid-free and lignin-free boxboard to offer permanent and durable storage. This fully enclosed box offers the highest quality, but low cost alternative to the range of cloth covered ringbinder boxes.

They are recommended by photographic conservators because of the quality of the archival board used, they offer ideal storage for Archives, Libraries and Collectors on a tight budget without sacrificing the highest standards of archival protection.

They have double walls on three sides of the base which give extra rigidity, strength and an extra layer of protection against fire and water. The small internal dust wings help to prevent the ingress of dust and dirt.

A box label is provided and the box is embossed for easy positioning of the label on two sides of the box, depending on the preference of the user as some users prefer the pages hanging vertically from the 'D' ring mechanism.

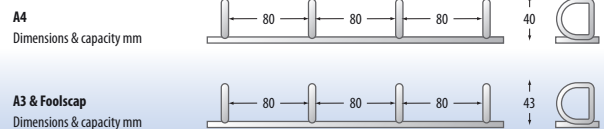
Since introduced the Library Ringbinder box there have been many imitators, most of which do not have the above features and also have single wall construction.

Archival mounting paper is available to fit the most popular polyester album pages.

Other sizes and colours can be made to special order.



#### Ring Configuration



#### Specifications

- Made from Premier™ 1300 micron Archival Folding Boxboard
- Acid-free, lignin-free, elemental chlorine-free
- Four post D-ring binder mechanism
- Label holders provided
- Supplied ready assembled
- Colour: Grey/White as standard
- Duke Parchment/White on request



Product code	Type	Colour	Thickness microns	Internal size inches	Internal size mm
400200	Foolscap	Grey/White	1300	153/8 x 13 x 2 1/4	390 x 330 x 57
400201	A3	Grey/White	1300	185/16 x 15 3/4 x 2 1/4	465 x 400 x 57
400199	A4	Grey/White	1300	12,79 x 12,20 x 2 1/4	325 x 310 x 57
400199/DK	A4	Duke Parchment/White	1300	12,79 x 12,20 x 2 1/4	325 x 310 x 57

50 page capacity



A small example of the range of Polyester Album Pages available to fit the A4 ringbinders



STYLE CODE AB07

## Timecare® Library CD120 Ringbinder Box System

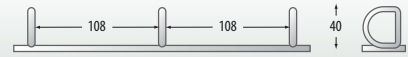
*Proactive protection system for the storage of digital media.*

The CD 120 ringbinder storage system for CD/DVD's features Corrosion Intercept® technology CD album pages which attract and neutralise corrosive gases extending the life of your digital media. The CD120 offers you 15 Corrosion Intercept® double sided pages presented in a Timecare® Premier archival acid-free and lignin-free ringbinder box.



400596

Ring Configuration  
Dimensions & capacity mm



Damage is caused to disks when ozone and reactive oxygen causes the aluminium layer on the CD/DVD's to breakdown.

When aluminium in a thin film oxidises, it becomes clear and unable to reflect the laser pulse attempting to read the CD/DVD. CD120 album pages protect against this failure.



Aluminium layer subject to oxidation from ozone and reactive oxygen. Damaged disc will be unable to play



- A.** A laquer layer is used to help prevent oxidation.
- B.** A reflective layer reflects the laser back.
- C.** A polycarbonate disc layer has the data encoded by using bumps.

**D.** A laser beam reads the polycarbonate disc, is reflected back and read by the player.

### Specifications

- Made from Premier™ Archival Folding Boxboard
- Board is acid-free and lignin-free
- Three-post D-ring binder mechanism
- Each Corrosion Intercept® page holds 8 CD/DVD's
- High density storage with 120 disc capacity
- Colour of box: Grey/White



### Applications

- Protective storage for digital media discs

Product code	Colour	microns	Internal size inches	Internal size mm	RA /FP
400596	Grey/White	1300	117/16 x 12¾ x 23/16	290 x 324 x 55	RA

## Corrosion Intercept Technology™ CD Jewel Case

Single jewel case consisting of a moulded Corrosion Intercept® insert tray to store the disk and a clear polystyrene outer. Insert tray has central push mechanism for easy disk release.



800106

### CORROSION INTERCEPT TECHNOLOGY™

Information

State of the Art in Corrosion Protection

Developed by Lucent Technologies Bell Labs

Distributed by Arte & Memoria Limited



... simply better protection!

CORROSION INTERCEPT® is a revolutionary, patented technology which uses semi-conductor technology to transform plastic into a protective reactive barrier against corrosive gases, fungus and bacteria. It is comprised of highly reactive copper particles bonded into a polymer matrix. This matrix film forms a preferential corrosion site that reacts and neutralises all corrosive gases that pass through or come in contact with the film. It is statistically improbable that they can migrate through the INTERCEPT film without contacting and reacting with one of the active corrosion sites. CORROSION INTERCEPT® provides a unique and effective protection for copper, silver, brass, bronze, ferrous and non ferrous metals. It has also been successfully used to protect CD's, photographic prints, film, textiles, paintings, books and other works of art on paper. This inert material does not give off any harmful gases and is unaffected by moisture, humidity or temperature and it has a built in saturation indicator. When the copper colour turns it is time to change the Intercept. The protection against corrosion is approximately 10 years per 0.025mm thickness of INTERCEPT.

[www.intercept-technology.com](http://www.intercept-technology.com)

Product code	Description	Size mm	Pack qty
800106	complete unit	124x142x15	5
800054	Insert only	117x140x10	5

Also Timecare® Ringbinder Box for storage in Corrosion Intercept® album pages see Boxes section page 19.

### Other CD Storage Cases (not corrosion Intercept)

Product code	Description	Size inches	Size mm	Pack qty
800103	Shatter-proof Visi Clear	47/8 x 59/16 x 3/8	124x142x10	1

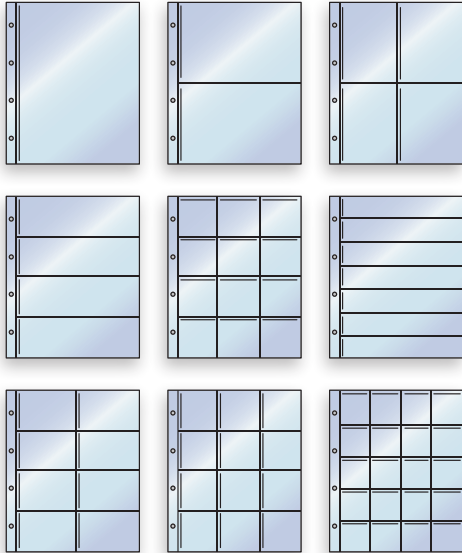


STYLE CODE AB08

**Timecare® Box POPULI Ringbinder**

New and improved archival quality. These hand-made boxes are fully enclosed and constructed from acid-free Superior Millboard™ lined on the inside with white Heritage Archival pHotoKraft™ paper. The outer box is covered with strengthened black paper and the spine covered with Library Buckram Cloth.

They come with a label holder and are fitted with four post 40mm capacity D-ring binder mechanism. Now available with a choice of coloured spines to help distinguish contents. Other sizes and colours can be made to special order.



Timecare Polyester Album Pages:  
A selection of the A4 pages available

50 page capacity



Product code	To fit	Colour outer/spine	Internal size inches	Internal size mm
400198	A4	Black/Black	13 x 12¼ x 2¼	330 x 311 x 57
400749	A4	Black/Green	13 x 12¼ x 2¼	330 x 311 x 57
400750	A4	Black/Ochre	13 x 12¼ x 2¼	330 x 311 x 57
400751	A4	Black/Purple	13 x 12¼ x 2¼	330 x 311 x 57
400752	A4	Black/Blue	13 x 12¼ x 2¼	330 x 311 x 57
400753	A4	Black/Red	13 x 12¼ x 2¼	330 x 311 x 57
400754	Foolscap	Black	153/8 x 13 x 2¼	390 x 330 x 57

## Ring Configuration for POPULI &amp; MUSEUM



Three post D-ring mechanism to special order.

STYLE CODE AB09

**Timecare® MUSEUM Ringbinder Box**

The 'Museum' box has been protecting archival materials since the early 1980's. These hard wearing, stylish, hand-made boxes offer maximum protection for the storage of especially sensitive material, such as photographic negatives, where the safest possible microclimate is called for. Constructed from acid-free PAT tested Premier™ Archival Board. The box is covered in hard wearing, high quality, black Library Buckram that is moisture and vermin resistant.

Other sizes and colours can be made to special order.

**Specifications**

- Made from Premier Archival boxboard
- Covered in high quality black Library Buckram
- Board contains less than 5 parts per million reducible sulphur
- Board passes the ANSI pH 1.35 Photographic Activity Test
- Fitted with four post D-ring binder mechanism
- Colour: Black
- For full board specification see catalogue vol 1.

**Applications**

- Suitable for use for long term archival storage of photographs, prints, negatives, transparencies, drawings and other valuable art work



50 Timecare® Album Page capacity

Product code	To fit	Colour	Internal Size inches	Internal Size mm
400196	A4	Black Library Buckram	13 x 12¼ x 2¼	330 x 311 x 57

STYLE CODE AB10

**Timecare® CONNOISSEUR Ringbinder Box**

The Connoisseur Ringbinder Box has a sophisticated appearance that will appeal to the specialist collector and will not look out of place in the most traditional library, boardroom or study.

It is a sturdy hand made box covered in duo tone library buckram with gold blocking, rounded spine and brass corner protectors.

The interior is lined with archival Benchkote™ paper and fitted with a 4 ring 'O' mechanism on the spine, this allows the box to lie completely flat when open and it has capacity for 50 Timecare Album pages. Other sizes and colours can be made to special order.

Product code	Colour	Internal Size inches	Internal Size mm
400755	Blue/Russet (Library Buckram)	14 x 115/16 x 15/8	335 x 288 x 41

Ring Configuration

Dimensions & capacity mm



STYLE CODE AB11

**Timecare® MUSEUM Portfolio Box**

Made for long term storage or high quality presentation, these top quality stylish hand made portfolio boxes offer protection of sensitive material. A wide range of formats include most common photographic sizes. They can be co-ordinated with the range of *pHoton™* papers, envelopes, folders, Heritage Protectors and Timecare polyester products.



Photographic 'P-Box' ref, see p 9

Product	Ref	Colour	Internal size inches	Internal size
400358	P1	Black Library Buckram	103/8 x 83/8 x 1½	263 x 212 x 38
400404	A4+	Black Library Buckram	12¼ x 93/16 x 1½	311 x 233 x 38
400448		Black Library Buckram	123/8 x 97/8 x 1	314 x 251 x 25
400360		Black Library Buckram	123/8 x 97/8 x 2	314 x 251 x 51
400451	PX	Black Library Buckram	143/8 x 113/8 x 2	365 x 289 x 51
400410	A3	Black Library Buckram	171/8 x 12¼ x 1¼	435 x 311 x 32
400411	A3	Black Library Buckram	171/8 x 12¼ x 25/8	435 x 311 x 66
400363	P3	Black Library Buckram	163/8 x 123/8 x 1¼	416 x 314 x 32
400364	P3	Black Library Buckram	163/8 x 123/8 x 2½	416 x 314 x 63
400412	A3+	Black Library Buckram	193/8 x 137/16 x 111/16	492 x 342 x 43
400414	P4	Black Library Buckram	203/8 x 163/8 x 1¼	517 x 416 x 32
400415	P4	Black Library Buckram	203/8 x 163/8 x 2½	517 x 416 x 63
400413	A2	Black Library Buckram	241/8 x 173/16 x 115/16	612 x 437 x 50
400416	P5	Black Library Buckram	243/8 x 203/8 x 3	619 x 517 x 76
400756	A1	Black Library Buckram	33½ x 23¾ x 2½	851 x 604 x 63

Timecare® Portfolio Carrying Cases also available.

400416

Shown with Timecare® Crystal Protector (see Transparent Storage section p60-61)

Hand made and covered with black Library Buckram



**Applications**

- Suitable for the archival storage of photographic prints, negatives, transparencies, drawings, letters, other valuable artwork, literature or ephemera





## STYLE CODE ABI2

**CONCORDE Portfolio Box***Drop spine/front style: 4 protective side walls*

These drop spine, drop front hand-made boxes are constructed from acid-free boxboard, lined on the inside with white acid-free paper. The lid is designed to lie flat when open. Covered with black Library Buckram Cloth. Each box contains a 5mm white Plastazote® sheet which assists removal of the box contents. Aluminium label holder fitted on front, long side. Often used as high quality presentation or portfolio boxes.

Product code	Colour	Internal size inches	Internal size mm
400757	Black	181/8 x 111/4 x 29/16	460 x 285 x 65
400758	Black	211/4 x 165/16 x 29/16	540 x 415 x 65
400759	Black	291/8 x 207/8 x 23/16	740 x 530 x 55
400760	Black	481/4 x 331/8 x 13/8	1225 x 842 x 35

**Specifications**

- Made of Acid-free board, 1600gsm, pH7.5
- Lined on the inside with acid free paper.
- Tyvek hinges.
- Label holder on the short side.
- Formats suitable for mounting standards (40.5 x 53cm and 73 x 52cm).
- Colour: Black Buckram cloth.



## STYLE CODE ABI3

**CARROUSEL Portfolio Box***Drop spine/front style: 3 protective side walls with strap*

These drop spine, drop front hand-made boxes are constructed from acid-free boxboard, lined on the inside with white acid-free paper. The lid is designed to lie flat when open. Covered with black Library Buckram Cloth. Spines are made of Tyvek® for exceptional tear and fold strength. Aluminium label holder fitted on short side. Easy access allowing use on an easel, with a strap on the short side. The separate inner board liner enables easy lifting of mounts with strap.



Aluminium Label Holder

Product code	Colour	Internal size inches	Internal size mm
400761	Black	169/16 x 125/8 x 29/16	420 x 320 x 65
400762	Black	161/8 x 211/4 x 23/8	410 x 540 x 60
400763	Black	207/8 x 291/8 x 115/16	530 x 740 x 50
400764	Black	305/16 x 247/16 x 115/16	770 x 620 x 50

## STYLE CODE ABI4

**OPERA Portfolio Box***Drop spine: 4 protective side walls*

These drop spine, hand-made boxes are constructed from acid-free boxboard, lined on the inside with white acid-free paper. The lid is designed to lie flat when open. Covered with black hydrophobic cloth.

Product code	Colour	Size inches	Size mm
400765	Black	125/8 x 101/4 x 29/16	320 x 260 x 65
400766	Black	125/8 x 169/16 x 29/16	320 x 420 x 65
400767	Black	169/16 x 201/2 x 29/16	420 x 520 x 65
400768	Black	201/2 x 247/16 x 29/16	520 x 620 x 65
400769	Black	201/2 x 263/8 x 115/16	520 x 670 x 50
400770	Black	247/16 x 325/16 x 23/16	620 x 820 x 55

**Specifications**

- Aluminium label-holder at front, on the long side.
- Colour: black water resistant cloth





**Daniel Charles Solander**  
1736–1782

## The History of Dr. Solander

Daniel Charles Solander (1736–1782), the botanist, was born in Sweden. He was a pupil of Linnaeus, on whose advice he came to England, where he became Assistant Librarian and afterwards Keeper of Printed Books at the British Museum. He travelled on the Endeavour with Captain Cook on his expedition to the Pacific, his situation in the Museum being kept open for him during his absence.

He was also a Fellow of the Royal Society and acted as Secretary and Librarian to Sir Joseph Banks, the eminent scientist. It is curious that, although unsuccessful attempts were made to commemorate his name, the useful book-form box designed by him, and considered the most satisfactory type of case for prints and manuscripts, is still known as a Solander Box. The good doctor lived 200 years before conservators discovered the need for an acid-free environment and today's Solander Boxes incorporate the very latest available archival materials to protect the contents. In all other respects the design and quality of craftsmanship have been maintained.

STYLE CODE AB15

### SOLANDER SUPREME Hand Made Boxes

#### The ultimate storage box

Hand-made with plywood frame. Acid-free archival boxboard base, lid and inner shoulders.

Covered in Library Buckram. Lined throughout with acid-free paper. Incorporating polythene barrier between the plywood frame and acid-free shoulder. Card holder fitted to spine of box. Available in 23 colours of Library Buckram – please specify colour when ordering.

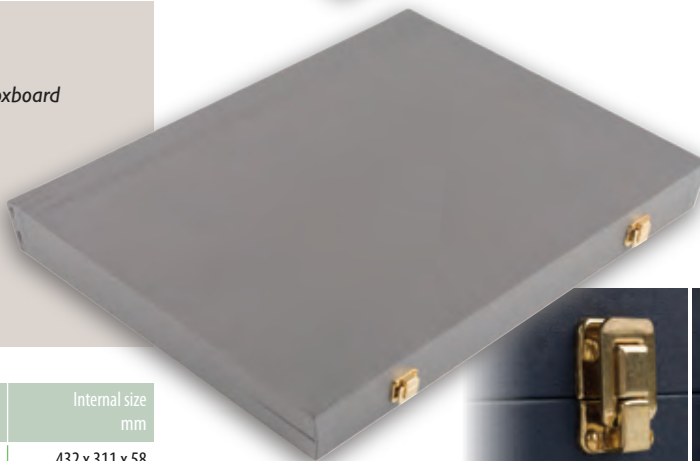
All boxes are hand made to order and we will be pleased to discuss any variations that may be required



400204A3

#### Specifications

- Hand-made with plywood frame for strength
- Base, lid and shoulder made with acid-free archival boxboard
- Covered in Library Buckram
- Lined throughout with acid-free paper
- Incorporating polythene barrier
- Supplied ready-assembled
- Card holder fitted
- 23 colours
- Attaché fasteners/hooks can be fitted if required at additional cost



Product code	Type	Internal size inches	Internal size mm
400204A3	A3	17 x 12¼ x 25/16	432 x 311 x 58
400771	Royal	22½ x 16½ x 25/16	572 x 419 x 58
400772	A2	237/8 x 17 x 25/16	606 x 432 x 58
400773	Imperial	27½ x 20½ x 25/16	699 x 521 x 58
400774	Atlas	32½ x 24½ x 25/16	826 x 622 x 58
400775	A1	335/8 x 237/8 x 25/16	854 x 606 x 58

#### Library Buckram Cloth Colours

The Library Buckram sample colours shown are a visual guide for initial selection of colour only.

It is important to note that the colours seen will vary according to your computer monitor settings, as well as the settings of your colour printer; should you print off this visual guide. If a precise colour match is important to you, please request an actual colour swatch sample from Arte & Memoria Limited.





## STYLE CODE BB01

**Premier™ Hinged Lid Glass Plate Negative, Microfiche, Postcard and CD Storage Box**

This multi-purpose hinged lid box has a unique design that helps give rigidity and strength, including a double thickness inner wall at the front. These boxes are made from Premier™ Archival acid-free and lignin-free Boxboard. The box has a fully hinged lid to allow easy access to contents. The sturdy box style is ideal for storing heavy items. The boxes are supplied flat-packed for easy low cost shipping and space saving. Secured using tabs and slots for assembly without the need for wire stitching or gluing.

They can be supplied with Plastazote® Channel Panels, extra internal boxboard liners or activated carbon charcoal matting™ for extra protection.



Glass plate negative boxes: example shown of option with Plastazote® Channel Panels to hold negatives vertically within a pHoton™ four flap folder.

**Specifications**

- Made from Premier™ Archival Folding Boxboard
- Supplied flat-packed
- Colour: Grey/White as standard
- Duke Parchment/White colour available for special order

LONG LIFE

**Applications**

- Suitable for archival storage of glass plate negatives as well as microfiche, negatives, photographs and postcards

**TOLERANCES & ADVICE ON ORDERING SOLANDER BOXES**

The manufacture of Solander Boxes is a handmade process where small variations in the materials used make it impossible to work to engineering tolerances. To help avoid problems or disappointment we advise the following tolerances and procedure to be taken when specifying a special size of box.

Unless otherwise specified we will always add 12mm to any object size given i.e. 512 x 712mm internal box size for a 500 x 700mm object size. This allows for variations in the materials used in the construction of the box and possible variations in size and squareness of your object. If requested by you the minimum we will add to your object size will be 6mm on each dimension i.e. 506 x 706mm internal box size for a 500 x 700mm object size.

**When ordering please specify the following:**

**A.** The size of the object that the box will contain.

**B.** The internal size of the box bearing in mind the tolerances stated above. If closer tolerances are required we are happy to discuss the alternatives which may involve a different method of construction and having the object or a dummy around which the box can be built.

**C.** The maximum external size of the box. This is important if the box has to fit a specific size of bay or shelf. Having this information is useful because it may not be possible to give the internal size required if the maximum external size is too small. Hopefully an expensive mistake can be avoided and an alternative style of box or storage solution can be recommended.

**D.** If you intend to store polyester pockets or sleeves within the boxes please ensure to allow enough tolerance between the object size and the polyester storage enclosure. This will vary according to the thickness and size of the object so it is hard for us to recommend a standard tolerance. For example a thin photograph may only need 6mm adding on each dimension where a thicker item such as mounted item say 5mm thick may need 12mm adding depending on preference. Please take this only as a guide as we cannot be responsible for this decision and you must satisfy yourself that the enclosure is large enough for the object and that ease of insertion meets your requirements.

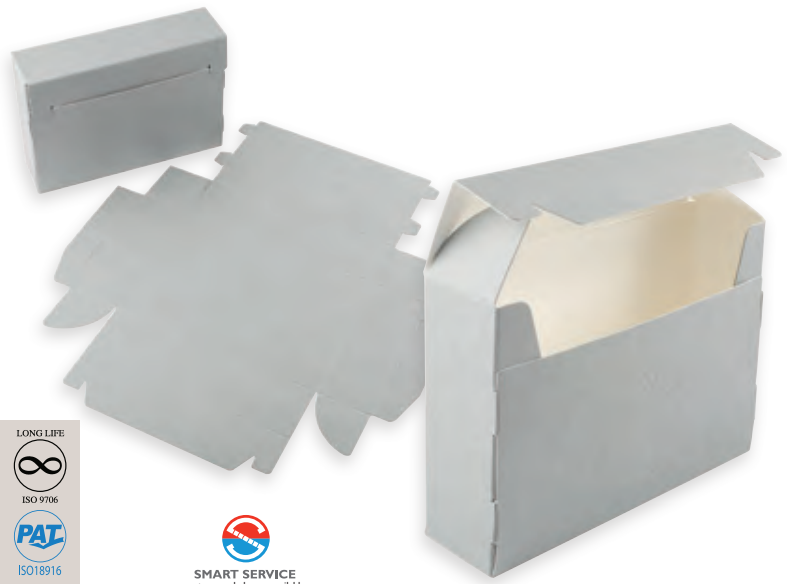
Product code	Description	Colour	Thickness microns	Internal size inches	Internal size mm	RA /FP
400180	Stereo Negative	Grey/White	650	4½ x 27/16 x 115/16	115 x 62 x 50	FP
400180/DP	Stereo Negative	Duke Parchment/White	650	4½ x 27/16 x 115/16	115 x 62 x 50	FP
400194		Grey/White	1300	4¾ x 1113/16 x 23/16	120 x 300 x 55	FP
400181	Quarter Glass Plate*	Grey/White	1300	51/16 x 57/8 x 43/16	128 x 150 x 106	FP
400184	5"x4" Glass Plate Negatives*	Grey/White	1300	51/8 x 1113/16 x 45/16	130 x 300 x 110	FP
400185	5"x4" Glass Plate Negatives	Grey/White	1300	53/16 x 67/16 x 45/8	132 x 164 x 118	FP
400776		Grey/White	1300	55/16 x 1113/16 x 71/16	135 x 300 x 180	FP
400186	35x70mm Glass Plate Negatives	Grey/White	1300	5½ x 1113/16 x 215/16	140 x 300 x 75	FP
400186/DP	35x70mm Glass Plate Negatives	Duke Parchment/White	1300	5½ x 1113/16 x 215/16	140 x 300 x 75	FP
400777		Grey/White	1300	57/8 x 67/16 x 415/16	150 x 164 x 125	FP
400361	Postcard/Microfiche	Grey/White	1300	61/8 x 51/8 x 4¼	156 x 130 x 108	FP
400778		Grey/White	1300	6¼ x 55/8 x 51/16	158 x 143 x 128	FP
400187	5"x6" Glass Plate Negatives	Grey/White	1300	65/16 x 7½ x 511/16	160 x 190 x 145	FP
400779		Grey/White	1300	611/16 x 57/8 x 51/8	170 x 150 x 130	FP
400182	Half Glass Plate*	Grey/White	1300	7½ x 57/8 x 511/16	190 x 150 x 144	FP
400182/DP	Half Glass Plate*	Duke Parchment/White	1300	7½ x 57/8 x 511/16	190 x 150 x 144	FP
400190	5"x7" Prints	Grey/White	1300	7½ x 57/8 x 57/8	190 x 150 x 150	FP
400780	5"x7" Prints	Grey/White	1300	7½ x 1113/16 x 5½	192 x 300 x 140	FP
400781		Grey/White	1300	87/16 x 4¾ x 69/16	215 x 120 x 166	FP
400782	Full Glass Plate	Grey/White	1300	87/8 x 89/16 x 71/16	225 x 217 x 179	FP
400202	Full Glass Plate*	Grey/White	1300	9 x 57/8 x 73/8	229 x 150 x 188	FP
400188	Full Glass Plate	Grey/White	1300	91/16 x 51/8 x 611/16	230 x 130 x 170	FP
400191		Grey/White	1300	913/16 x 6½ x 57/8	250 x 165 x 150	FP
400783		Grey/White	1300	105/8 x 3¾ x 77/8	270 x 95 x 200	FP
400784		Grey/White	1300	1013/16 x 57/8 x 87/8	275 x 150 x 226	FP
400785		Grey/White	1300	123/16 x 315/16 x 91/16	310 x 100 x 230	FP
400786		Grey/White	1300	13¾ x 315/16 x 10¼	350 x 100 x 260	FP
400787		Grey/White	1300	33/8 x 61/8 x 33/8	86 x 155 x 86	FP
400788	With concertina divider	Grey/White	1300	83/8 x 143/16 x 65/16	212 x 360 x 160	FP
400192	Upright for 3.5"x4" prints	Grey/White	1300	45/16 x 1113/16 x 3¾	110 x 300 x 95	FP
400195	Upright 'D' ring pull. CD Storage	Grey/White	1300	5½ x 125/8 x 65/16	140 x 320 x 160	RA
400789	Upright	Grey/White	1300	911/16 x 55/8 x 711/16	246 x 143 x 195	FP

\*with liner.

**STYLE CODE** BB02

**Premier™ Upright Document Boxes**

Made from Premier Archival acid-free and lignin free boxboard A one-piece upright box with hinged lid to allow easy access to contents.



**Specifications**

- Made from Premier™ Archival Folding Boxboard
- Supplied flat-packed
- Colour: Grey/White as standard
- Duke Parchment/White colour available for special order



**Applications**

- Suitable for archival storage of documents, photographs, prints, negatives, transparencies, drawings and ephemera

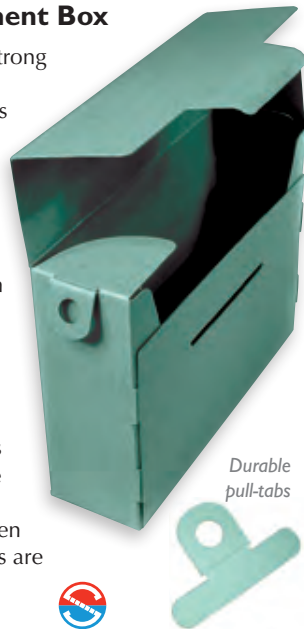
Product code	Colour	Thickness micron	Internal size inches	Internal size mm
400229	Grey/White	1300	14 1/8 x 31 1/2 x 10 7/8	377 x 100 x 265

**STYLE CODE** BB03

**Lydamore Upright Document Box**

The Lydamore Document Box is a strong flat-packed die-cut box made from EcopHant™ recycled boxboard. This upright box has a fully hinging lid on the long side to allow easy access to contents and two durable tabs for easy handling and carrying.

Great care has gone in to the design of this box to minimise ingress of water from a burst pipe/flood by the addition of 'water wings' to the top of the box. The specification of the EcopHant material is also water resistant and bleed proof. The boxes are supplied flat-packed with all the fittings for easy low cost shipping and space saving. Self assemble when ready to use. Certain styles of boxes are embossed with a box reference number and year of manufacture. Embossing can be specified to all boxes for special order.



Durable pull-tabs



**Specifications**

- Made from EcopHant™ recycled acid-free boxboard
- Supplied flat-packed
- Durable pull tab and water wings
- Colour: Elephant Green



**Applications**

- Suitable for archival storage of documents, photographs, prints, negatives, transparencies, drawings and ephemera

Product code	Type	Colour	Thickness microns	Internal size inches	Internal size mm
400790	Folio	Elephant Green	1300	14 5/8 x 43 1/8 x 10 7/8	372 x 107 x 277

For assembly instructions and more information on the wider range of Lydamore boxes see p22.

**STYLE CODE** BB04

**Premier™ pHlip™ Top Microfilm Boxes**

Made using Premier Archival acid-free and lignin-free boxboard, this upright one-piece die-cut box has a fully hinged lid on the one side to allow easy access to contents offering both practical and safe storage.

Suitable for archival storage of 35mm microfilm.



**Specifications**

- Made from 650 micron Premier™ Archival Folding Boxboard
- Acid-free, lignin-free, OBA-free
- Supplied flat-packed
- Colour: Grey/White as standard
- Duke Parchment/White colour available for special order



Product code	Colour	Thickness micron	Film	Internal size inches	Internal size mm
400148	Grey/White	650	16mm	6 x 6 x 1	152 x 152 x 25
400600	Grey/White	650	16mm	3 x 3 x 1	76 x 76 x 25
400147	Grey/White	650	16mm	37/8 x 37/8 x 1	98 x 98 x 25
400146	Grey/White	650	35mm	37/8 x 37/8 x 15/8	98 x 98 x 41



BB

HINGED LID BOXES

STYLE CODE BB05

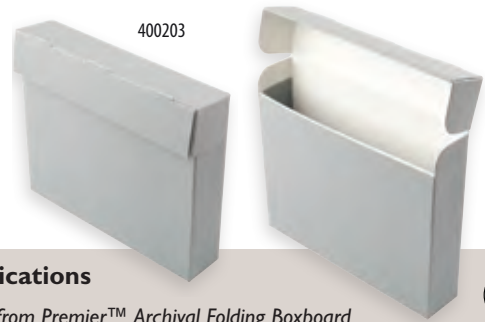
**Premier™ Upright Hinged Lid Box**

Made from Premier Archival acid-free and lignin-free Boxboard, this box has a fully hinged lid on the long side. It is die-cut, brass wire-stitched with an inner liner to cover the stitches and has a crash-lock base that allows it to be flat-packed for easy low cost shipping and space saving.

Originally designed for *pHoton™* paper enclosures for 12 x 10" glass plate storage, however this style is now available in other sizes to provide storage solutions for a variety of artifacts.



BXPMLM3880



400203

**Specifications**

- Made from Premier™ Archival Folding Boxboard
- Supplied flat-packed
- Colour: Grey/white as standard
- Duke Parchment/White colour available for special order

**Applications**

- Suitable for archival storage of documents, photographs, phonographic records. eg. LP records, CDs, prints, large glass negatives and ephemera.

Product code.	Description	Colour	Thickness microns	Internal size inches	Internal size mm
400203	10" x 8" glass plate negatives	Grey/White	1300	10½ x 57/8 x 87/8	267 x 150 x 226
400205	12" x 10" glass plate negatives	Grey/White	1300	12¼ x 2½ x 10¼	311 x 64 x 260
400206	LP Storage – with D-ring pull	Grey/White	1300	13 x 4¾ x 13	330 x 120 x 330
400357	LP Storage	Grey/White	1300	15 x 2½ x 12	381 x 64 x 305

STYLE CODE BB06

**NOTARY Box***Upright hinged lid, drop front*

A stylish hand made box for the storage and preservation of documents in files or folders.

This special design allows good accessibility: the lid hinges backwards while the front drops open completely. Handle and label holder. Black Buckram cloth covering.



400792

**Specifications**

- Made of 1800gsm acid-free board.
- Lined with 120gsm acid free paper.
- Front of box has handle and label-holder.
- Colour: Black Buckram cloth.

Product code	Colour	Internal size inches	Internal size mm	RA /FP
400792	Black	15¾ x 1113/16 x 77/8	400 x 300 x 200	RA

**Foolscap folio: its definitions and origins****Information**

Foolscap Folio was the traditional paper size used in Europe and the British Commonwealth before the adoption of the international standard A4 paper (the most common standard size in the world) and nominally measures 8.5 inches by 13.5 inches (215.9 x 342.9mm).

Foolscap was named after the fool's caps and bells watermark commonly used from the fifteenth century onwards on paper of these dimensions. In Britain the use of paper with Foolscap watermarks was very rare in the sixteenth and seventeenth century with most examples found in papers imported from either the lower Rhine or from Northern France. By the middle of the eighteenth century the most usual watermarks in Foolscap paper were the Lion of the seven Provinces or the seated Britannia, which by 1800 had become the standard watermark for Foolscap paper.

STYLE CODE CB01

### Premier™ Carry Case With Handle

A one-piece box made from Premier™ Archival acid-free and lignin-free Boxboard. Designed for storage and transport, they can be stored horizontally or vertically and can be supplied with Premier™ Archival Folders to divide and protect items within the box. This system has been successfully used for the storage of newspapers, parchments, documents, photographs, prints and drawings. The cases have a hinged lid fastened by one or more snap-in plastic clips and have a strong plastic carrying handle.



#### Specifications

- Made from Premier™ Archival Folding Boxboard
- Supplied flat-packed or ready-assembled
- Colour: Grey/white as standard
- Duke Parchment/White colour available for special order



Product code	To fit	Colour	Thickness micron	Internal size inches	Internal size mm	RA /FP
400793		Grey/White	1300	181/8 x 211/16 x 139/16	460 x 69 x 344	FP
400794	Imperial/A1	Grey/White	1300	33 x 25/8 x 227/16	838 x 66 x 570	FP
*400795		Grey/White	1300	18½ x 31/8 x 133/8	470 x 80 x 340	RA

\* Cambridge Newspaper Carry Case shown.

#### Applications

- Suitable for the storage of newspapers, parchments, documents, photographs, prints and drawings.

### The Cambridge Newspaper System

This system was the result of using applied product knowledge and 'lateral' thinking when we were asked by a client to design a new system for storing their newspapers archive.

Previously the storage of bound and boxed newspapers was both expensive and time consuming. The introduction of the designed system has made this archival task much less daunting.

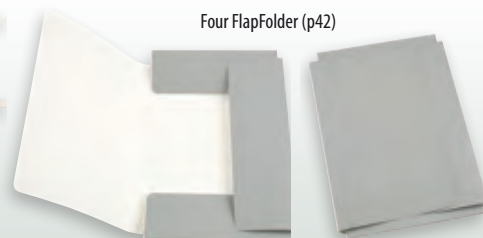
This Cambridge Newspaper System makes the handling of dated newspaper editions easier to store, but rigid and light enough to be carried from the library shelf to reader.

The system consists of a Premier™ Carry Case containing four Premier™ Multi Crease Folders each of which protect 10 or more newspapers editions. It is fastened with two snap lock clasps on the lid and is supplied with a label and holder for clear identification. The swivel handle allows simple removal from a shelf and a comfortable carrying grip.



400795 Carry Case With Handle\*

Four FlapFolder (p42)





## STYLE CODE DB01

**Premier™ Heavy Duty Library, Print & Newspaper Boxes.**

Originally made for storing newspapers these two-part boxes are extremely strong and rigid. They have double walls on all sides, including the base and lid which have inserts that are snapped or glued in to place. They are strong enough to multiple stack even when heavily loaded. The double wall construction offers extra strength and improved protection against fire and water.

The design of box is particularly suitable for large sizes.

Boxes can be supplied flat packed or ready assembled for an additional charge.

*NB: Please note that some large boxes can be awkward to construct. We also advise gluing the separate (double thickness) pad into the lid. Please ask for more details.*

**Specifications**

- Made from Premier™ Archival Folding Boxboard
- Supplied flat-packed or ready assembled
- Colour: Grey/White as standard
- Duke Parchment/White colour available for special order

**Applications**

- Suitable for archival storage of newspapers, prints, drawings, documents, photographs, textiles and ephemera

Product code	Description	Colour	Thickness micron	Internal size inches	Internal Size mm	RA /FP
400796		Grey/White	1300	325/16 x 23¼ x 39/16	820 x 590 x 90	FP
400116	Imperial	Grey/White	1300	313/8 x 24½ x 213/16	797 x 623 x 71	FP
400797		Grey/White	1300	279/16 x 227/16 x 23/8	700 x 570 x 60	FP
400798		Grey/White	1300	253/16 x 1711/16 x 3	640 x 450 x 76	FP
400799		Grey/White	1300	24¾ x 203/8 x 115/16	628 x 518 x 50	FP
400115	Half Imperial	Grey/White	1300	245/16 x 17 x 3	617 x 432 x 76	FP
400800		Grey/White	1300	23½ x 149/16 x 115/16	597 x 370 x 50	FP
400801		Grey/White	1300	23 x 19 x 3	584 x 483 x 76	FP
400802		Grey/White	1300	1911/16 x 133/8 x 57/8	500 x 340 x 150	FP
400803		Grey/White	1300	1515/16 x 117/16 x 315/16	405 x 290 x 100	FP
400804		Grey/White	1300	1415/16 x 61/8 x 41/8	380 x 156 x 105	FP
400621		Grey/White	1300	133/8 x 105/8 x 3¾	340 x 270 x 95	FP

## STYLE CODE DB02

**Premier™ Archival Textile Storage Box**

Two part box box with separate lid and base, single wall construction. Semi circular thumb cuts in the lid to aid removal and side pull tabs. Manufactured without metal parts that can snag on the textiles. The boxes are supplied flat-packed for low cost shipping, space saving and self assembly when ready to use.

We are able to assemble these boxes for you at an additional cost.

**Specifications**

- Premier Archival Folding Boxboard
- Colour: Grey/White as standard
- Duke Parchment/White colour available for special order



Product code	Colour	Thickness micron	Size inches	Size mm	RA /FP
400114	Grey/White	1300	30 x 24 x 6	762 x 610 x 152	FP
400113	Grey/White	1300	30 x 18 x 6	762 x 457 x 152	FP

STYLE CODE DB03

### Lydamore Flat-Packed EcopHant™ Boxes Recycled Green Archival Storage Boxes

Acid-free, flat-packed green EcopHant™ archival storage boxes offer buyers high quality conservation storage for a similar price to traditional non archival brown chipboard boxes.

The Lydamore range is a strong, modular system made from EcopHant™ recycled boxboard.

The boxes were initially designed and developed to resolve a space problem for one of A&M's existing customers, the Essex Record Office, and is consequently named in honour of their first conservator, Amy Lydamore.

Designed to accommodate most popular document sizes the boxes have two robust pull tabs for easy handling and removal of the lid. Some boxes feature drop front options for ease of access to contents. They feature a unique wall liner that is snapped in place by inert plastic fixings. Lydamore boxes are available in three different styles and eight sizes. They are supplied flat-packed with all the fittings to reduce delivery costs and save on storage space.



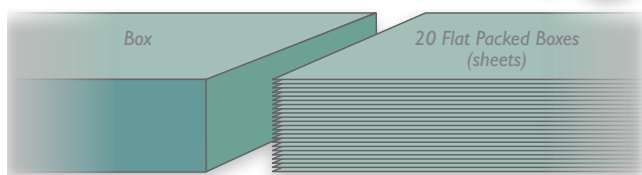
Image courtesy of Essex Record Office

#### Specifications

- Made from EcopHant™ recycled acid-free boxboard,
- 100% Chemically Purified Wood-free Fibre
- pH 7 — 7.5
- Acid-free and Lignin-free
- O.B.A. free
- Supplied ready-assembled or flat-packed
- Colour: Elephant green, colour-fast
- Neutral sized for water resistance



For details of Lydamore Upright Box see p18



Approximately 20 flat packed boxes take up the same height as one fully made up box.

#### LYDAMORE BOX

Easy assembly procedure



Product code	Description	Colour	Thickness microns	Internal size inches	Internal size mm	RA /FP
400805	A4	Elephant Green	1300	133/8 x 105/8 x 45/16	340 x 270 x 110	FP
400806	Foolscap	Elephant Green	1300	153/8 x 105/8 x 45/16	390 x 270 x 110	FP
400807		Elephant Green	1300	1515/16 x 1113/16 x 4 3/4	405 x 300 x 120	FP
400808		Elephant Green	1300	1515/16 x 1113/16 x 71/16	405 x 300 x 180	FP
400809		Elephant Green	1300	1515/16 x 1113/16 x 23/8	405 x 300 x 60	FP
400810	Drop front	Elephant Green	1300	1515/16 x 1113/16 x 39/16	405 x 300 x 90	FP
400811	Drop front	Elephant Green	1300	235/8 x 1515/16 x 39/16	600 x 405 x 90	FP

#### Information

##### What are EcopHant™ boxes?

The EcopHant™ boxes are green in colour and by nature. Arte & Memoria aim for zero waste in its box manufacturing by recycling its expensive and high quality, long fibre, acid-free and lignin-free post production paper and board waste.

This waste is then made into high-density Superior™ bookbinders millboard and slightly lower density EcopHant™ boxboard using a non-adhesive board-making machine.

Offering long-term protection from light, dust, fire and water, EcopHant™ is neutral sized for water resistance and is colourfast.

This exceptional high strength green board will outlast regular brown kraft/chipboard boxes and corrugated boxes by decades.

## STYLE CODE DB04

**EcopHant™ Box & Lid**

Extremely strong and rigid two-part die-cut box wire stitched supplied ready assembled Box & Lid made from EcopHant™ boxboard.

Ordinary brown kraft lined chipboard boxes, found in many archives, are made from low grade raw materials of a moderate (Low Acid) pH. These boxes have been used for years by archives because they were the best and only low cost alternative to a fully specified Premier™ Grade Archival Box. Now there is an alternative, the Green EcopHant™ Archive Box.

**Specifications**

- Made from EcopHant™ recycled acid-free boxboard,
- 100% Chemically Purified Wood-free Fibre
- pH7 to 7.5
- Acid-free and Lignin-free
- O.B.A. free
- Supplied fully assembled
- Colour: Elephant Green

**Applications**

- Suitable for archival storage of documents, photographs, prints, negatives, transparencies, drawings and ephemera

Product code	Type	Colour	Thickness microns	Internal Size inches	Internal Size mm	RA /FP
400812		Elephant Green	1300	117/16 x 117/16 x 415/16	290 x 290 x 125	RA
400813		Elephant Green	1300	133/16 x 10 1/4 x 811/16	310 x 220 x 260	RA
400814	A4	Elephant Green	1300	133/8 x 105/8 x 3/4	340 x 270 x 95	RA
400815		Elephant Green	1300	1415/16 x 91/16 x 4/4	380 x 230 x 120	RA
400816		Elephant Green	1300	1415/16 x 10 1/4 x 415/16	380 x 260 x 125	RA
000034/200		Elephant Green	1300	1415/16 x 113/16 x 4/4	380 x 300 x 120	RA
000033/300		Elephant Green	1300	153/16 x 911/16 x 45/16	385 x 246 x 110	RA
400432	Foolscap	Elephant Green	1300	153/16 x 105/8 x 45/16	385 x 270 x 110	RA
400817		Elephant Green	1300	1711/16 x 4 3/4 x 4 3/4	450 x 120 x 120	RA
400818		Elephant Green	1300	18 x 12 x 215/16	457 x 305 x 75	RA
400819		Elephant Green	1300	18 x 12 x 511/16	457 x 305 x 145	RA
400820		Elephant Green	1300	18 x 12 x 913/16	457 x 305 x 250	RA
400821		Elephant Green	1300	18 1/4 x 87/16 x 59/16	463 x 214 x 141	RA
400822		Elephant Green	1300	273/8 x 87/16 x 511/16	695 x 215 x 145	RA

## STYLE CODE DB05

**Premier™ Tabless Box & Lid**

Made from Premier Archival acid-free and lignin-free boxboard this two-part box has double thickness walls on the short end.

Interlocking internal construction with no external tabs. Full depth lid with thumb cuts to aid lid removal.

**Specifications**

- Made from Premier™ Archival Folding Boxboard
- Supplied flat-packed
- Colour: Grey/White as standard

**Applications**

- Suitable for archival storage of books, documents, photographs, prints

Product code	Colour	Thickness micron	Internal size inches	Internal size mm	RA /FP
400823	Grey/White	1300	1113/16 x 117/16 x 31/8	300 x 290 x 80	FP
400824	Grey/a	1300	1113/16 x 1113/16 x 51/8	300 x 300 x 130	FP

**Zero Waste Initiative**

Arte & Memoria Limited manufactures a wide range of Premier Grade Boxes, Folders and Envelopes. This process produces a large amount of acid-free and lignin-free paper and board waste. Recycling this waste allows us to produce the new high specification Green EcopHant™ Board.

The recycled board created for these low cost Green EcopHant™ Archive Boxes is a high density, hard pressed material making the boxes stronger, longer lasting and more resistant to fire and flood than any other equivalent box available.

Certain styles of boxes are embossed with a box reference number and year of manufacture. Embossing can be specified to all boxes for special order.

**Information**



**STYLE CODE DB06**

**Premier™ Tabbed Box & Lid**

Made using Premier Archival acid-free and lignin-free boxboard this is a double wall design box and lid. Secured using tabs and slots for assembly without the need for wire stitching or gluing. The boxes are supplied flat-packed for easy low cost shipping and space saving.



**Specifications**

- Made from Premier™ Archival Folding Boxboard
- Supplied flat-packed
- Colour: Grey/White



**Applications**

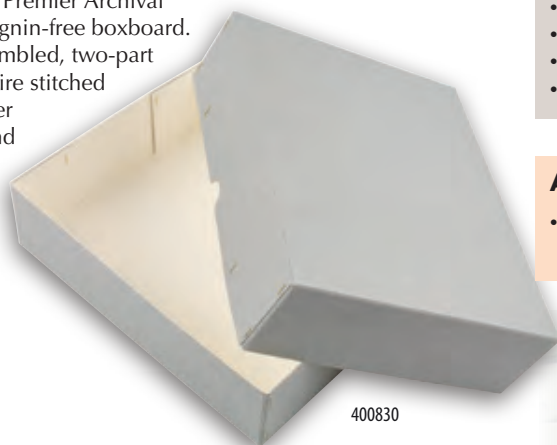
- Suitable for archival storage of books, documents, photographs, prints

Product code	Colour	Thickness micron	Internal size inches	Internal size mm	RA /FP
400825	Grey/White	1300	40 15/16 x 27 9/16 x 1 1/2	1040 x 700 x 38	FP

**STYLE CODE DB07**

**Premier™ Wire Stitched Box & Lid (standard)**

Produced from Premier Archival acid-free and lignin-free boxboard. This ready assembled, two-part die-cut brass wire stitched box and lid offer permanence and durability, for long life storage.



400830



**Specifications**

- Made from Premier™ Archival Folding Boxboard
- Wire stitched, non rusting brass or stainless steel
- Supplied ready-assembled
- Colour: Grey/White
- Duke Parchment/White colour available for special order



**Applications**

- Suitable for archival storage of documents, photographs, prints, negatives, transparencies, drawings and ephemera

Product code	Colour	Thickness micron	Internal size inches	Internal size mm	RA /FP
400826	Grey/White	1300	8 3/4 x 4 3/4 x 3 9/16	220 x 120 x 90	RA
400827	Grey/White	1300	14 7/16 x 10 1/4 x 3 3/4	366 x 260 x 95	RA
400828	Grey/White	1300	14 9/16 x 10 5/8 x 4 5/16	370 x 270 x 110	RA
400829	Grey/White	1300	14 3/4 x 14 3/4 x 4 3/4	375 x 375 x 120	RA
400830	Grey/White	1300	14 3/4 x 11 13/16 x 3 15/16	375 x 300 x 100	RA
400831	Grey/White	1300	15 3/16 x 10 5/8 x 4 5/16	385 x 270 x 110	RA
400832	Grey/White	1000	15 x 11 7/8 x 4 1/2	382 x 302 x 115	RA
400833	Grey/White	1300	15 3/4 x 11 13/16 x 7 5/16	400 x 300 x 185	RA
400834	Grey/White	1300	15 3/4 x 12 1/2 x 7	400 x 318 x 178	RA
400835	Grey/White	1300	16 x 9 x 2 15/16	406 x 229 x 75	RA
400836	Grey/White	1300	16 x 9 x 5 1/2	406 x 229 x 140	RA
400837	Grey/White	1300	16 9/16 x 7 7/8 x 4 15/16	420 x 200 x 125	RA
400604	Grey/White	1300	16 15/16 x 12 3/16 x 13/16	430 x 310 x 30	RA
400838	Grey/White	1300	17 1/4 x 13 x 5 13/16	438 x 330 x 147	RA
400839	Grey/White	1300	23 3/4 x 15 3/4 x 5 7/8	590 x 400 x 150	RA
400840	Grey/White	1300	27 x 23 x 7 1/16	686 x 584 x 180	RA
400841	Grey/White	1300	27 9/16 x 22 7/16 x 3 15/16	700 x 570 x 100	RA
400842	Grey/White	1300	27 9/16 x 22 7/16 x 6 5/16	700 x 570 x 160	RA
400843	Grey/White	1300	30 x 21 x 6	762 x 534 x 152	RA
400844	Grey/White	1300	30 11/16 x 23 3/4 x 3 15/16	780 x 590 x 100	RA
400845	Grey/White	1300	30 11/16 x 23 3/4 x 6 7/8	780 x 590 x 175	RA
400846	Grey/White	1300	33 7/16 x 25 9/16 x 3 1/8	850 x 650 x 80	RA
400847	Grey/White	1300	40 1/4 x 30 x 3 15/16	1022 x 762 x 100	RA



STYLE CODE DB08

**Premier™ Large Storage and Transit Box & Lid**

400848

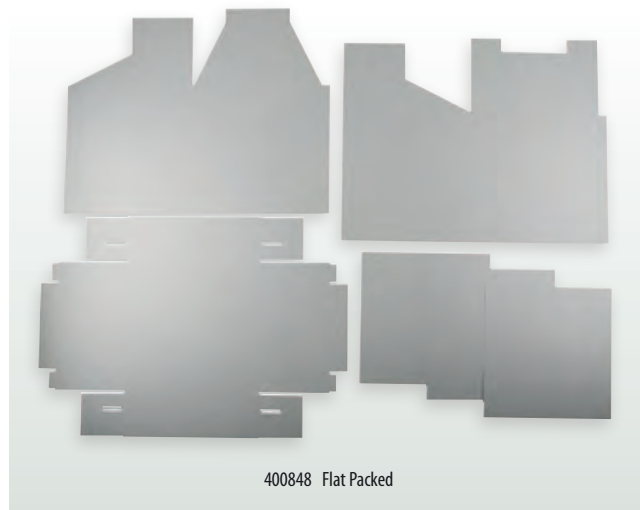
These large boxes were designed for transport and storage. They are a two part design. The side wall of the box is stitched with brass wire and has a crash lock flat base. They feature an insert pad in the base to spread the load and prevent the crash lock base being forced open.



This was an innovation designed for use in the Telescopic Cube Tubes. The lid is constructed using tabs and slots. The box ships flat for self assembly.



If the boxes are stacked on top of each other we recommend the addition of an extra inner wall made from double wall EB Premier Archival Fluted Boxboard.



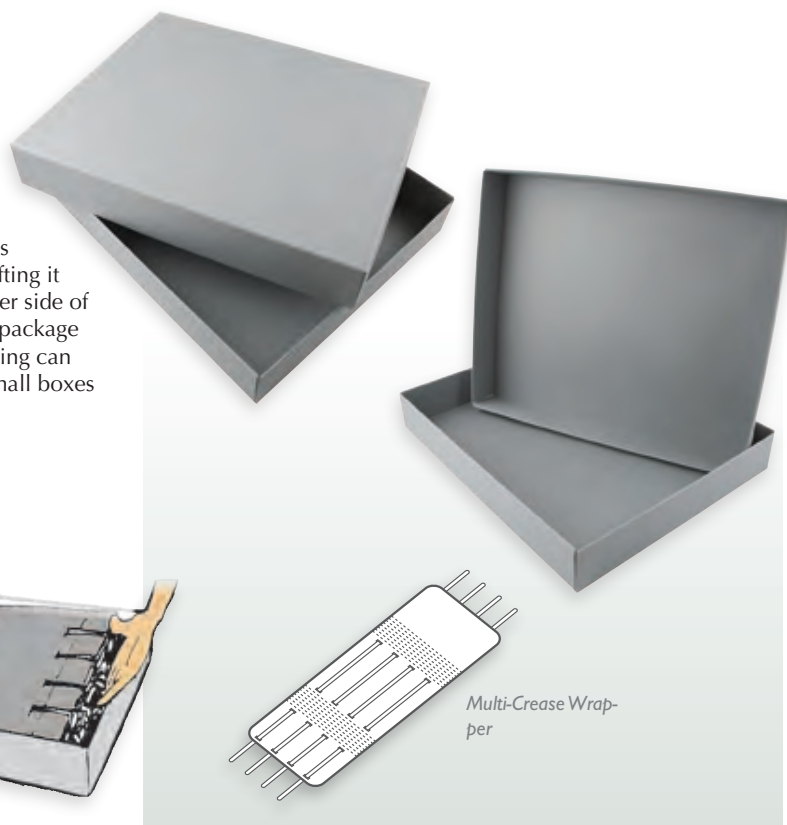
400848 Flat Packed

Product code	Colour	Thickness microns	Internal Size inches	Internal Size mm	Lid depth mm	RA /FP
400848	Grey/White	1300	1811/16 x 18½ x 1811/16	475 x 470 x 475	162mm	FP
400849	Grey/White	1300	12 x 10 x 13	305 x 254 x 330	50mm	FP

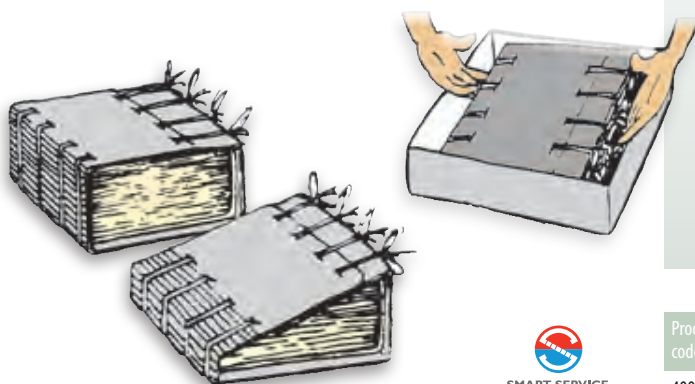
STYLE CODE DB09

**Premier™ Wallpaper Sample Book Storage Box & Multi-Crease Wrapper**

Produced originally for the storage and protection of wallpaper sample books e.g. Sandersons, this very sturdy box is based on our Newspaper Box, but is deeper and also features a 1300 micron wrapper with multi-creases and cotton tape tying slots. This wrapper is designed to enclose snugly the volume and facilitates lifting it safely out of the storage box. Sufficient space is left either side of the wrapper to allow easy access for lifting. To stop the package sliding about in the box Plastazote blocks or other packing can be inserted into the four corners. We can supply four small boxes or Plastazote blocks if required.



Multi-Crease Wrapper



Product code	Colour	Thickness micron	Size inches	Size mm	RA /FP
400095	Grey/White	1300	26 x 215/8 x 315/16	660 x 550 x 100	FP

**The Nicholas Hadgraft Scholarship**

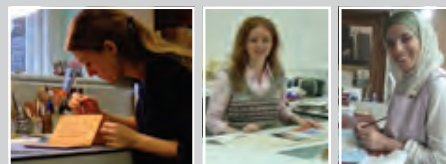
Created in 2005, the scholarship is an award of £1000 towards the cost of attending the Montefiascone Book Conservation Summer School held each year in the Medieval Hill Town of Montefiascone, located between Rome and Siena.

The scholarship is offered in memory of Dr Nicholas Hadgraft, a good friend of Conservation by Design who died tragically in 2004. Nicholas was a fellow of the University of the Arts London and a key collaborator on the 'Squelch Drying' technique devised by Stuart Welch (the founder of Conservation by Design), the most effective way to date of drying valuable rare books.

For more details, see [www.conservation-by-design.co.uk](http://www.conservation-by-design.co.uk) [www.monteproject.com](http://www.monteproject.com)

RECENT SCHOLARSHIP WINNERS

2010 winner: Rachel Sawicki  
 2009 winner: Louise Robertson  
 2008 winner: Betul Caricka



**STYLE CODE EB01**
**Premier™ Palm Leaf Storage Box**

This complex box was designed in conjunction with Deborah Farndell of Cambridge University Library for the protection of rare and delicate 'Palm Leaf' manuscripts. The brief was to make a box that gave maximum protection and ease of access to the manuscripts. It is a two part box with a full depth lid. The base has two wide double wall 'L' shaped sides which are mitred and hinged on the short sides. When open this gives complete access for handling and when closed offers superb protection of the delicate edges of the Palm Leaf pages which are held between wooden boards.

The same design of box can be applied to other delicate objects and using the parametric design on our 'Smart Box™' Kasemake A&M computerised box maker we can produce boxes to virtually any size.


**Applications**

- Palm leaf books and other delicate objects
- Size to suit your requirements, prices on application


**STYLE CODE FB01**
**Premier™ Window Box**

The Premier™ Window Box comes in four parts: base, lid, polyester sheet and base insert pad. Each box has two thumb cuts in the lid on the long sides. The lids have a viewing square with radiused corners, covered with transparent polyester inside the lid.

The polyester pieces are supplied separately for you to insert and require no adhesive. The box base and lid are constructed with double walls for greater strength and solidity. The separate lid is normally ¾ depth.

The boxes are supplied flat-packed for easy low cost shipping and space saving. Self assemble when ready to use. If requested we can supply cut to size inserts using a variety of useful products including: Plastazote®, Corrosion Intercept® Foam, A&M Charcoal Felt Matting® and Silica Gel.



Other window box designs available with metal edge. See p32.


**Specifications**

- Made from 650 micron Premier™
- Supplied flat-packed
- Colour: Grey/White as standard
- Duke Parchment/White colour available for special order


**Applications**

- Suitable for archival storage of a variety of items that need to be viewed through the lid
- Originally designed for geological specimens but has proven useful for a wide variety of museum objects

Product code	Colour	Thickness micron	Size inches	Size mm	RA /FP
400850	Grey/White	650	315/16 x 23/8 x 19/16	100 x 60 x 40	FP
400851	Grey/White	650	4¾ x 315/16 x 23/16	120 x 100 x 55	FP
400852	Grey/White	650	4¾ x 315/16 x 23/8	120 x 100 x 60	FP
400853	Grey/White	650	71/16 x 315/16 x 31/8	180 x 100 x 80	FP
400854	Grey/White	650	97/16 x 77/8 x 4¾	240 x 200 x 120	FP
400855	Grey/White	650	23/8 x 115/16 x 19/16	60 x 50 x 40	FP



## STYLE CODE GB01

**EcopHant™ Skull Box with Tray & Lid**

Extremely strong and rigid three-part die cut box, tray & lid made from EcopHant™ recycled acid-free boxboard. This style of box is designed to enable viewing the artifact by lifting the lid and/or studying/checking without touching the object by pulling out the tray like a drawer.

**Specifications**

- Made from EcopHant™ recycled acid-free boxboard, 100% Recycled
- 100% Chemically Purified Wood-free Fibre
- pH7 to 7.5
- Acid-free and lignin-free
- O.B.A. free
- Supplied flat-packed
- Colour: Elephant Green
- Also available in Premier™ Archival Boxboard – price on application

**Applications**

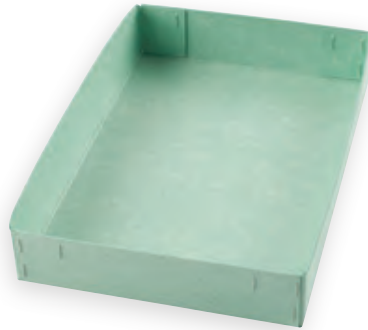
- Suitable for archival storage of items such as a skull

Product code.	Description	Colour	Thickness microns	Size inches	Size mm	RA /FP
400856	EcopHant Box & Lid	Green	1100	513/16 x 87/16 x 67/16	147 x 214 x 164	FP
400857	EcopHant Box & Lid	Green	1100	511/16 x 133/16 x 69/16	145 x 335 x 166	FP

## STYLE CODE HB01

**Storage Trays**

Simple tray, made from single and double wall premier Archival Folding Boxboard, EcopHant Board or Heritage Archival Photokraft (HAPK) ideal for artifacts or specimens.

**Applications**

- Suitable for archival storage, natural history collections, museum collections within drawers and cabinets

Product code.	Description	Material	Colour	Thickness microns	Size inches	Size mm	RA /FP
400858	Double wall	HAPK	White	500	4 x 31/16 x 19/16	102 x 77 x 40	FP
400859	Double wall	HAPK	White	350	2¾ x 115/16 x 13/16	70 x 50 x 30	FP
400860	Double wall	Premier™	Grey/White	1000	813/16 x 1013/16 x 47/16	224 x 275 x 112	RA
400861	Wire stitched	EcopHant™	Elephant Green	1300	177/8 x 89/16 x 211/16	454 x 217 x 68	RA



## STYLE CODE IB01

**Premier™ Magazine/Pamphlet Boxes**

Manufactured from Premier Archival acid-free and lignin-free boxboard, this one-piece box has a cut away top edge for access to vertically stored pamphlets, magazines or documents - allowing permanent visibility. Die-cut and secured using tabs and slots without the need for wire stitching or gluing.



Premier™ Magazine/Pamphlet boxes are supplied flat-packed for easy low cost shipping and space saving. Self assemble when ready to use.

**Specifications**

- Made from Premier™ Archival Folding Boxboard
- Supplied flat-packed
- Colour: Grey/White as standard
- Duke Parchment/White colour available for special order



PRODUCT CODE	COLOUR	THICKNESS MICRON	SIZE INCHES	SIZE MM	RA /FP
400328	GREY/WHITE	1300	8¾ x 97/16 x 2¾	222 x 240 x 70	FP

STYLE CODE IB02

### Premier™ Open Top File Box

This one piece open top box has been designed for easy access to working files. They can also be used in filing cabinets. They are embossed to position labels and are supplied flat for self assembly.



#### Specifications

- Made from Premier™ Archival Folding Boxboard
- Supplied flat-packed
- Colour: Grey/white as standard Duke Parchment/ white on request



#### Applications

- Suitable for archival storage of books, documents, photographs, prints



Product code	Description	Colour	Thickness micron	Size inches	Size mm	RA /FP
400862	Foolscap Folio	Grey/White	1300	13¾ x 125/16 x 315/16	350 x 313 x 100	FP

STYLE CODE JB01-2

### Premier™ Cube Tubes™ Telescopic and non telescopic

Easy stacking telescopic and non telescopic Cube Tubes™, made from Premier Archival acid-free and lignin-free boxboard. The boxes are supplied flat-packed for easy low cost shipping and space saving until ready to use. The telescopic design offers the flexibility to store rolls of varying length. When constructed these boxes make it easier to extract items than conventional round tubes, thereby making it a safer form of storage for the object. They feature hinged tops that cannot get lost and yet allow access without removal from the stack/shelf. They can also be stacked more easily into neat blocks.



Product code	Description	Colour	Thickness microns	Internal size inches	Internal size mm	RA /FP
400298	Telescopic	Grey/White	1300	315/16 x 315/16 x 31½	100 x 100 x 800	FP
400299	Telescopic to approx 1500mm	Grey/White	1300	315/16 x 315/16 x 45¼	100 x 100 x 1150	FP
400863	Telescopic to approx 2050mm	Grey/White	1300	711/16 x 67/8 x 31½	195 x 175 x 800	FP
400302	As above but with handle	Grey/White	1300	711/16 x 67/8 x 31½	195 x 175 x 800	FP
400662	Telescopic to approx 1500mm	Grey/White	1300	4¾ x 4¾ x 31½	120 x 120 x 800	FP
400661	Telescopic to approx 1500mm	Grey/White	1300	57/8 x 57/8 x 31½	150 x 150 x 800	FP
400300	Telescopic to approx 1500mm	Grey/White	1300	77/8 x 77/8 x 31½	200 x 200 x 800	FP
400303	Non Telescopic	Grey/White	1300	15/16 x 115/16 x 45¼	50 x 50 x 1150	FP
400304	Non Telescopic	Grey/White	1300	315/16 x 315/16 x 45¼	100 x 100 x 1150	FP
400678	Non Telescopic	Grey/White	1000	31/8 x 31/8 x 31½	80 x 80 x 800	FP
400659	Non Telescopic	Grey/White	1300	315/16 x 315/16 x 31½	100 x 100 x 800	FP
400660	Non Telescopic	Grey/White	1000	315/16 x 315/16 x 31½	100 x 100 x 800	FP



#### Specifications

- Made from Premier™ Archival Folding Boxboard
- Supplied flat-packed
- Colour: Grey/white as standard Duke Parchment/White on request



#### Applications

- Suitable for archival storage of maps, plans, prints, drawings and textiles



## STYLE CODE JB03

**Chartpak Roll Storage**

Inert polypropylene plastic tubes for the storage of maps, plans and materials housed in roll form. The static free polypropylene units with end pieces in place are dust and water proof and the easy grip aids handling. The unique Chartpak design prevents discolouration or fade damage from UV Tubes. Available in two diameters and can be lengthened by using additional spacer pieces to extend the tube length as required. Should the tube be too long, simply remove a spacer until you have the correct length. Independent tests have established that the Chartpak system has a neutral range pH and does not contain any additives that might migrate at any point in the future.

**Specifications**

- Inert polypropylene
- Supplied ready-assembled
- Neutral pH
- U.V. protection
- Static free polypropylene units
- Available in two diameters
- Additional spacer pieces
- Color: Grey

**Applications**

- Suitable for storage of maps, plans and materials housed in roll form

Product code	Description	Colour	Internal size inches	Internal size mm	RA /FP
400310	Spacer	Grey	12 x 215/16 ∅	305 x 75 ∅	RA
400311	Bottom Cap	Grey	22¼ x 215/16 ∅	565 x 75 ∅	RA
400312	Top Cap	Grey	4¼ x 315/16 ∅	108 x 100 ∅	RA
400313	Spacer	Grey	12 x 315/16 ∅	305 x 100 ∅	RA
400314	Bottom Cap	Grey	223/8 x 315/16 ∅	568 x 100 ∅	RA

∅ = Diameter

**When ordering:**

- Decide how many spacers, bottom and top caps you require, prices vary according to the total amount taken.
- Sizes can be mixed to benefit price breaks.



## STYLE CODE JB04

**Rollsafe™ Storage Tubes**

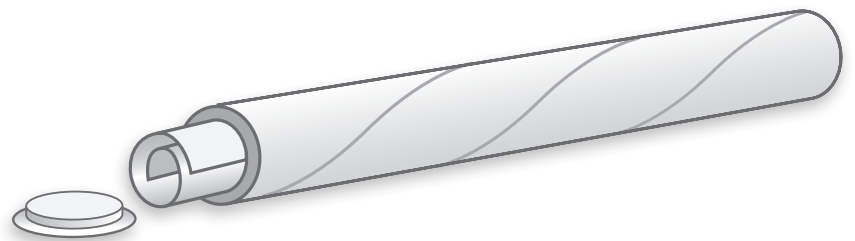
Made from Heritage Archival pHotoKraft™ paper to produce a tube of the highest conservation quality. This bespoke product is available on application.

**Custom Made Rollsafe Tube Service**

Plastic end plugs are also available for the most common internal tube diameters including:

5mm (2")	76mm (3")	101mm (4")
152mm (6")	200mm (8")	254mm (10")

All Rollsafe™ tubes are *made to order*. Please allow time for manufacturing.

**Specifications**

- Acid-free, lignin-free and passes the PAT photographic activity test.
- Available in White or Grey.

**Applications**

- Suitable for storage of maps, plans and materials housed in roll form

**Prague Floods & 'Squelch Drying'**

for more details, see website [www.conservation-by-design.co.uk](http://www.conservation-by-design.co.uk).



Archipress Vacuum packing machine in use for 'Squelch Drying' flood damaged materials.



Stage drying books vacuum packed with blotter/newspaper awaiting conservation studio in Prague.



Identical Test volumes – Prague  
The book on the left was dried using the 'Squelch Drying' technique, which gave better results than the freeze dried test shown on right